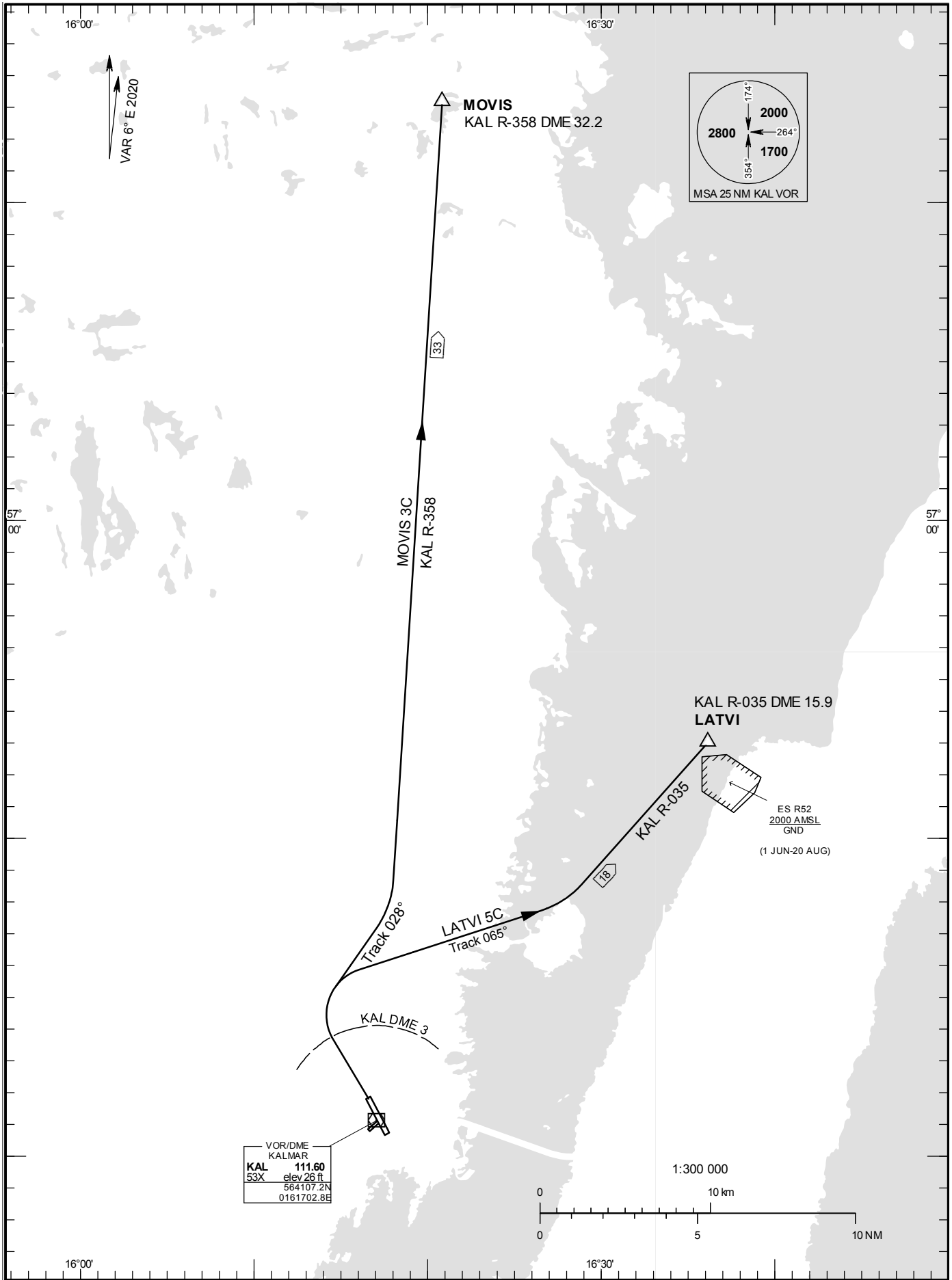


KALMAR
RWY 34

**STANDARD INSTRUMENT
DEPARTURE CHART (SID) -
ICAO**

HGT and ALT in ft
BRG are MAG
TA 5000 ft AMSL

KALMAR TOWER 130.805



KALMAR

DEPARTURE (SID) RWY 34

LATVI FIVE CHARLIE DEPARTURE (LATVI 5C)

Straight ahead to KAL DME 3. Turn right to track 065° to intercept KAL R-035 and proceed to LATVI.

MOVIS THREE CHARLIE DEPARTURE (MOVIS 3C)

Straight ahead to KAL DME 3. Turn right to track 028° to intercept KAL R-358 and proceed to MOVIS.